



accounting software specialists



Dayta Designs was founded in 1983. We became a fully accredited Sage Business Partner and Developer back in 1990 and are proud to be in the Sage Circle of Excellence.

Our Products

- Sage 200 Suite
- Sage CRM
- Sage 50
- Sage Payroll
- EDI Link

Our Services

- Telephone Support for all products inc. Sage Line 100 & Sage MMS
- Training
- Networking & Hardware
- Sage Development
- Accounting knowledge

“Perhaps it’s not so strange that the old adages continue to apply.
People always need sensible answers to their questions – solutions to their issues.

We keep on finding that honesty is still the best policy.

I am very fortunate in having a super team around me with many combined years of experience and high skill levels. Working with them is always a pleasure – a happy and capable team, and as a result, happy customers.”

Bob Day – Managing Director

Our Philosophy

We believe in taking the time to listen to you.

Only when we have a full understanding of your requirements, processes, people and goals for the future, do we propose the best solution for you.

We understand the challenges that can be involved with changing, upgrading and maintaining your business software and aim always to be there when you need us. It is important to us for you to feel confident about your decisions and build a good working relationship with Dayta Designs as your Business Partner.

Our Customers

Our customers are testaments to the care and attention that we take in delivering our implementation, development, training and support services. We are grateful to them for their trust and we never take it for granted.

We've found that companies stay with us year after year because we deliver a very friendly and timely service – an accolade of which we are rightly proud.

To discuss how Dayta Designs can assist your business, please contact us on:

Telephone	01296 770007
Email	sales@dayta.co.uk
Web	www.dayta.co.uk

PHILIPS

“We’ve been really pleased with the support we’ve received from Dayta Designs. Every time we’ve called we have had a quick response which has ensured the efficiency of our accounts department”.

Debbie Mumford – Management Accountant



WADDESDON THE ROTHSCHILD COLLECTION

“Dayta Designs have provided us with an excellent service that has met all our software needs. I would definitely recommend them to other businesses”.

David Silvester – Financial Controller



“We upgraded from Sage 50 to Sage 200 in order to gain better financial control of our projects with the Project Accounting module.

Dayta Designs’ obvious experience and knowledge of the software enabled them to think outside-the-box when helping us with the detail of our requirements. We have been delighted with the professional and efficient telephone support and on-going care.

I’d recommend them every time.”

Donal O’Dwyer – Group Financial Controller



Dayta Designs have been serving our Sage support requirements for over 2 years and have supported us efficiently through 2 upgrades. We have been particularly impressed with the wealth of knowledge this company possesses and the extremely positive and practical manner in which our support needs have been handled. With this in mind we would have no hesitation in passing our recommendations on.

Jenny Kennedy – Finance Manager



“We’re very pleased with the service and support provided by Dayta Designs. We’ve had lots of programming done recently to enhance the standard functionality of our software. We are more than happy with the end result and would recommend Dayta Designs as a supplier of standard and bespoke software”.

John Rew – Financial Controller



“The staff of the helpdesk have been knowledgeable, friendly and keen to help us resolve any problems we have had”.

John Dereham – Director of Finance
Oxfordshire Learning Disability
NHS Trust



“We wanted to upgrade from Sage 50 to Sage 200 and approached Dayta who calmly reassured us that our plans could work and offered workable solutions to our more demanding requirements. Dayta delivered the project on time, provided appropriate support to our staff throughout and continue to deliver a professional and knowledgeable service to us. I thoroughly recommend them.”

Ross Baker – Financial Director



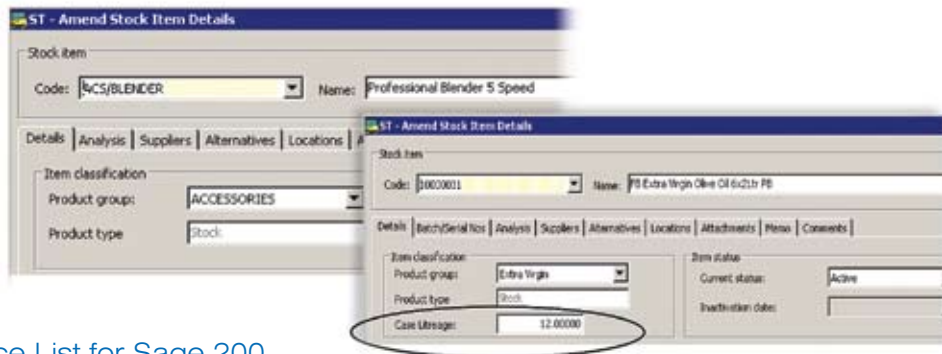
“EDI link has enabled Kittiwake to integrate Sage with our SQL server based e-business systems. We now process over 300% more orders but with only 60% more staff. The EDI package as a whole is flexible, easy to drive and stable”.

Gavin Friend – Operations Manager

Software Development

Dayta Designs has been an Authorised Sage Developer for over 20 years. We have built up a tremendous wealth of experience with Line 50, Line 100, Sage MMS and the Sage 200 Suite. Usually customers only need small enhancements to the software, although it will be comforting to know we can develop comprehensive bespoke modules too.

For some customers we might just add some extra fields to a stock record – see this example below: the standard screen is on the left and the modified on the right.



Invoice List for Sage 200

A more comprehensive add-on we've written is called Invoice List. A number of Line 50 users find that when they upgrade to Sage 200 there is no direct equivalent of the Line 50 Invoice module. The Sales Order Processing module in Sage 200 carries out the same functions, although it is not possible to view invoices that have been printed, yet not updated to the Sales Ledger. Invoice list allows you to see this information.

In addition, if you wish to change non-financial data once the invoice has been posted to the sales ledger, you can now do so and re-print with the amendments.

The screenshot shows the 'Sales Invoice Listing' window with a table of invoice data. The table has columns for Invoice Date, Invoice No, Order No, Name, Invoice Net, Invoice Gross, PO Raised By, and Status. The data is as follows:

Invoice Date	Invoice No	Order No	Name	Invoice Net	Invoice Gross	PO Raised By	Status
29/08/2009	0000000321	0000000329	Abbey Retail Ltd	14898.77	17493.02		Completed
29/08/2009	0000000316	0000000334	Total Home Care (Head Office)	975.00	1145.63		Completed
29/08/2009	0000000314	0000000332	Total Home Care Liverpool	14676.50	17244.89		Completed

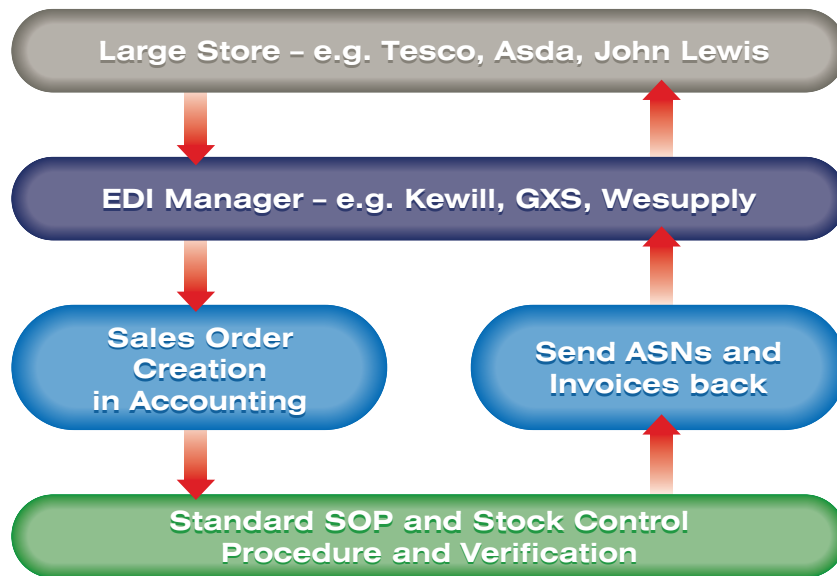
Another great feature is the ability to find which sales ledger account an invoice relates to when all you have is the invoice number.

EDI-Link

Major retailers use EDI (Electronic Data Interchange) as standard and expect their suppliers to process orders and invoices in this manner. What is not standard is the integration of orders into the accounts package and the automatic production and transmission of ASN's (Advance Shipping Notices) and invoices back to the major store.

Dayta Designs has created EDI-Link, which ensures that the whole process is performed automatically. A high degree of customisation is possible, thereby ensuring that EDI-Link becomes fully integrated into your system and is easy to use.

As a result, orders are processed quickly, accurately and integrated into your accounts without needing to re-key the detail.



"The EDI-Link which Dayta Designs supplied has been a wonderful time saver. Two days work can now be achieved in one afternoon – absolutely amazing. Great set-up and support in the installation. What did we do before we heard of them!"

Andrea Barclay – Operations Manager, Creative UK Ltd



Yew Tree Lodge Yeat Farm Cottages Wotton Underwood Aylesbury HP18 0RL UK
T 01296 770007 F 0871 7502366 E sales@dayta.co.uk W www.dayta.co.uk